

DESIGN MATRIX

PEOPLE • LIFESTYLE • DESIGN • INTERIORS

July-August 2014
VOL. 4 • ISSUE 5 • ₹100



Niroop & Rupana Reddy

“We introduce lot of green pockets and spaces inside the building”



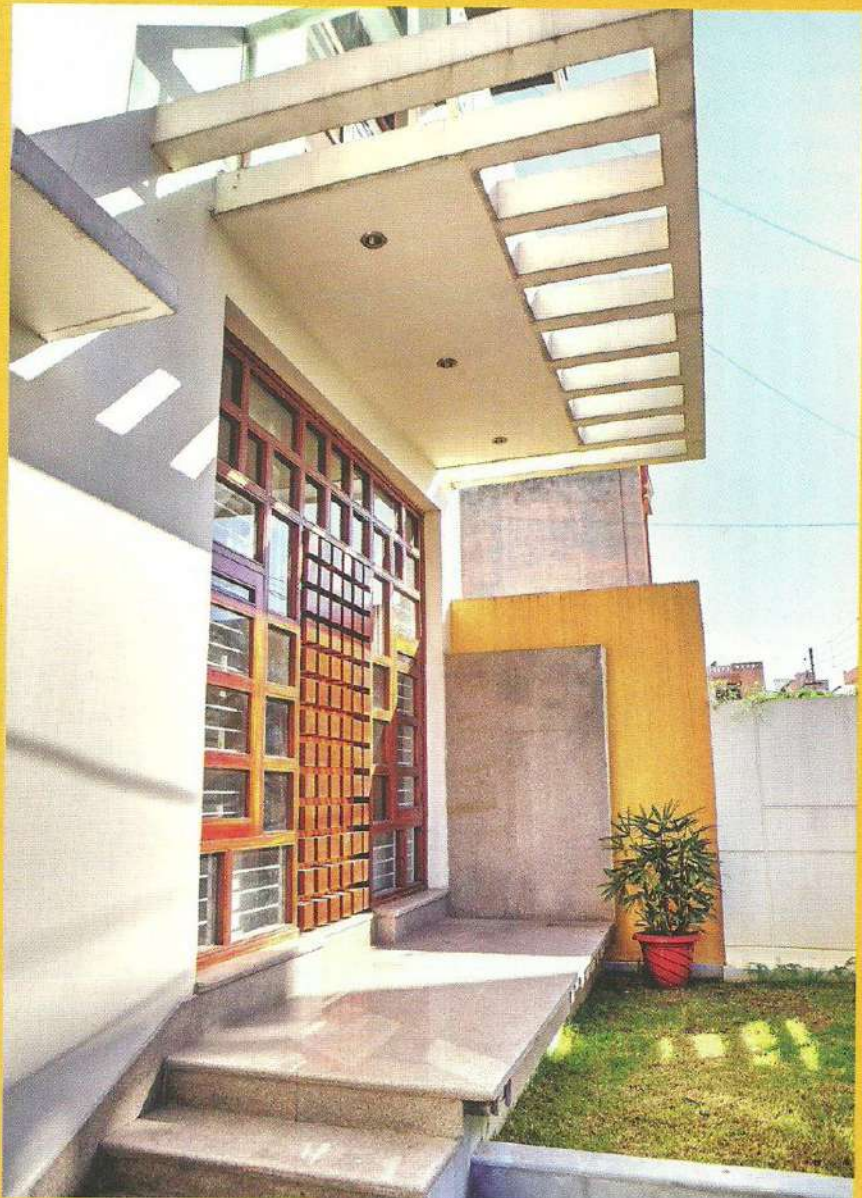
Studio An-V-Thot Architects Pvt. Ltd., New Delhi, headed by Ar. Ankita Sweety and Ar. Pratyosh Chandan, portrays a fashionable contemporary outlook in an abode, located at the City of Weaver. The house has a character of traditional feel in a contemporary outfit.

Photo courtesy: Saptorshi Majumdar

Architects Ankita and Pratyosh, firmly believes in the uttermost importance of any space within and beyond, rather than its built frame. Their endeavour lies in designing and developing an environment for stories to take birth and remain, where true feelings are captured and felt with a sense of belonging, only to resonate through time. "We intend to breathe, is what our motto is", says, Ar. Ankita, describing her philosophy towards designing.

Brainy design

Located in the heart of Panipat, Haryana, The House of Yellow Shadows is a double storey residence with four bedrooms. The first quarter of the ground floor has a guest room, drawing room and a powder. The central half caters to the lobby and dining, adjacent to the kitchen. The house hosts a semi open kitchen where storages have been made using commercial boards finished with German based high gloss PU pigment paint of light beige shade. The backsplash of maroon lacquered glass adds reflectivity and glamour to the whole area. The ceiling with an embossed floral pattern turns to become the railing of the first floor lobby. The lobby overlooks the raised drawing room, where the division



Luxury
design

HOUSE OF YELLOW SHADOWS

Fact File

Project Name:

The House of Yellow Shadows

Client:

Jyoti and Sunil Sharma

Design Team:

Studio An-V-Thot Architects Pvt.

Completion Date:

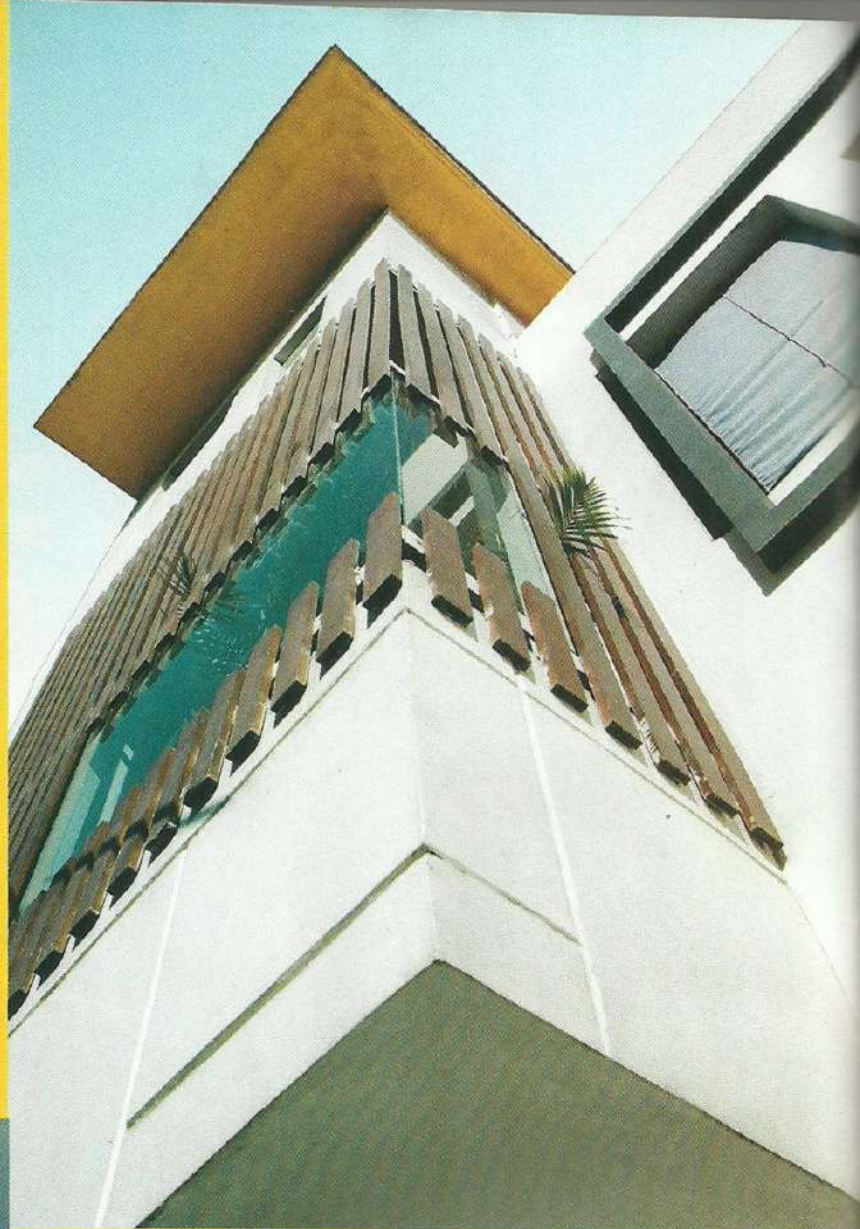
March 2014

Built-up Area:

3200 sq ft.

is created through a full height jali on both sides, at the foot of two planter beds hosting palm. This jali is made of wooden battens placed at equal distances in a wooden frame.

Wooden laminate flooring has been used in the drawing room. The shades of brown and white used in the fabrics and furnishings, creates a classy touch with in this space. To moderate the contemporary and bring "Desi" feel, the designers choose in custom made furniture in the lobby, which has an old school character to it with maroon in fabric. The vibrancy is created with custom made dining table. It adds to the character and acts as a bridge between lobby and the internal staircase. Explaining further, Ar. Pratyoosh says, "The brief required us to provide a separate staircase connecting to the terrace straight from the front lawn, which in case of an event can take guests to the open rooftop. To add life to the connection between floors, a small courtyard with a library has been placed through the creation of extended landing, where one is greeted with ever-changing play of sunlight and shadows. This was achieved through the insertion of vertical wooden louvers at equal intervals forming the outer skin of the stair façade."



The walls throughout the house have been finished with a combination of wallpapers, textured paint as well as wooden panelling. The flooring has a mix of Indian white marble and wooden laminate flooring. A lot of custom made lights using laser cut mdf board finished with high gloss paint and backed by translucent acrylic sheet have been used in the drawing room, lobby as well as bedroom, considering the fact that the house is facing to the West and is adjacent to built structures on both sides.

A double height wall finished with yellow textured paint acts as a backdrop to the internal staircase, which is made using MS structural work and framework. The steps are clad with solid wood and finished using PU polish and the railing shows a play of running MS tubular sections. The exposed MS here is finished in off-white high gloss paint. Understanding the dire need for natural light, this corner has a skylight at the double height with horizontal MS bands supporting the glass on top. The orientation of the cut-out is such that the play of sunlight and shadows reaches 25 feet down on to the ground floor and accentuates the Yellow. A custom made wall mounted artifact finished in high gloss blue colour negates the monotony. Evenings can also be cherished with moonlight charming the whole area.



Peeping into special spaces

The Puja room sits in a corner aloof from high circulation areas. The rear portion has two private rooms overlooking the landscaped backyard. The first floor has the daughter's room with an extended study cum library, a pantry, a store room and a family lounge overlooking lobby at the ground floor.


The master bedroom has a separate seating space to sit and chit-chat. The furniture, bed, cupboards and seating have been kept minimalistic in its form as well as in choosing colours for finish. More of white have been used for the finishes on the furniture with white leather upholstered bed back.

The parent's bedroom has a lot of storages as desired by the client, including an additional store room attached to it. It also has a study and tall book shelf. The bed back is panelled with cushioned leather of dark brown shade, which turns on to ceiling creating an illusion of inverted bed. The maroon, brown and off-white shades have been repeated here as well

The House of Yellow Shades for Studio An-V-Thot Architects was a great endeavour to convert a thought into reality and their effort has consistently led them for pursuit of excellence. The yellow house is a great design!

About the firm

"An-V-Thot" is a hybrid of two words, (anvit) Sanskrit and thought) English. "Anvit" means followed by, so it is actually a studio followed by a thought, and as the name suggests both Ankita and Pratyoosh are always eager to and strive to define their deeds in a thought evolving and settling manner.

This studio was inceptioned in 2009, since then the studio has taken up and completed several architectural and interior projects of varied nature, scale and sizes. Ar. Pratyoosh pursued Architectural Technology and Construction Management from Rai University and further pursued his architectural critique, from University of Brighton, UK. Thereafter, he co-created Studio An-V-Thot Architects with Ankita to provide design solutions. Ankita graduated with a distinction in her Architectural Degree from NIT, Patna and during the course, also won numerous National and State level design contests of repute. She is also a visiting faculty at an Architecture College in Gurgaon. Apart from that she confidently holds the post of country's editing member for World Architecture Community. 

studio.avt@gmail.com

